

# Milk CheckRx



Dehm Associates

P.O. Box 103

Geneseo, NY 14454

info@DehmAssociates.com

Dehm Milk  
Check Analysis  
585-243-4427

## Report For October, 2006

www.DehmAssociates.com

Average For

Range

Information based on milk produced the previous month

Milk Check	October	Low	High
Pay Price	13.34	12.04	14.23

Milk Price	\$/Cwt.	Low	High
Statistical Uniform Price	13.43	13.43	13.43
+ Butterfat Adjustment	0.14	-0.60	0.81
+ Protein Adjustment	0.08	-0.15	0.42
+ Solids Adjustment	0.00	-0.00	0.00
+ Location Differential	-0.89	-1.15	-0.55
- Handler Differential	-0.03	-0.40	0.22
+ Incentives	0.59	0.10	1.05
+ Forward Pricing	0.02	0.00	0.55
<b>= Pay Price</b>	<b>13.34</b>	<b>12.04</b>	<b>14.77</b>

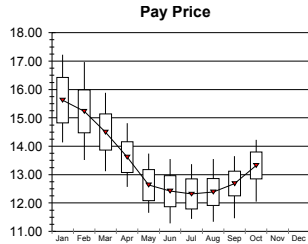
Component Pay Price	\$/lb		
Butterfat	1.42		
Protein	2.13		
Solids	0.16		
Producer Pay Differential	0.22	0.09	0.69

Component Yield	Average	Low	High
Butterfat Percent	3.60%	3.08%	4.07%
Protein Percent	3.03%	2.92%	3.19%
Solids Percent	5.72%	5.54%	5.92%
Butterfat Lbs / Cow	2.4	1.7	2.8
Protein Lbs / Cow	2.0	1.5	2.5
Solids Lbs / Cow	3.8	2.6	4.8

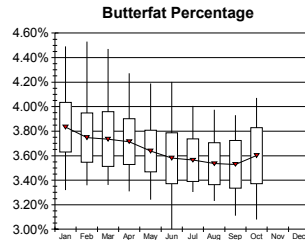
Marketing Costs	\$/Cwt.	Low	High
Pay Price	13.34	12.04	14.77
Hauling Costs	-0.66	-0.54	-1.24
Promotional Costs	-0.15	-0.15	-0.15
Mail Box Price	12.51	11.26	13.45

Daily Sales	\$/Cow	Low	High
Butterfat Sales	3.39	2.47	4.00
Protein Sales	4.30	3.18	5.40
Solids Sales	0.63	0.43	0.78
PPD Sales	0.15	0.05	0.55

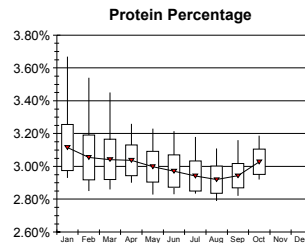
### Price



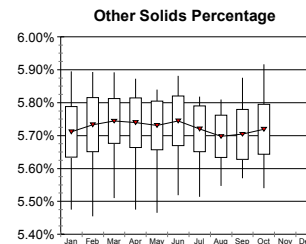
### Butterfat



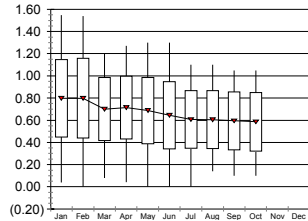
### Protein



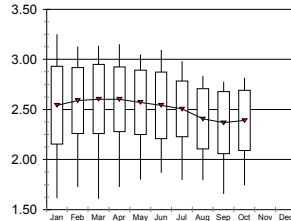
### Solids



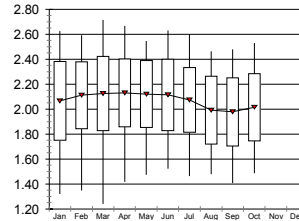
### Incentives



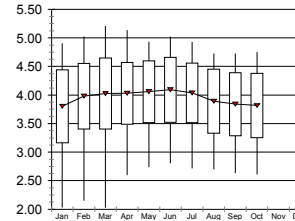
### Lbs Butterfat Shipped per Cow



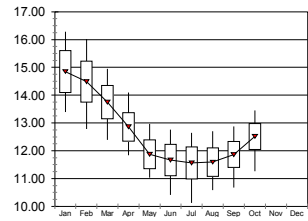
### Lbs Protein Shipped per Cow



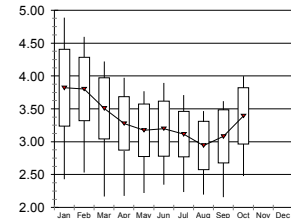
### Lbs Solids Shipped per Cow



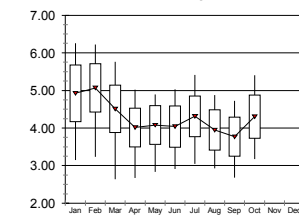
### Mail Box Price



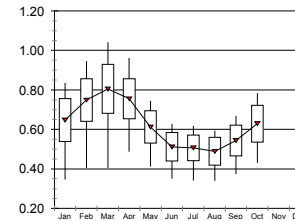
### Butterfat Sales per Cow



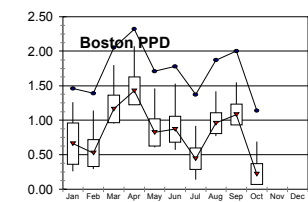
### Protein Sales per Cow



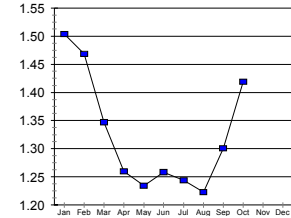
### Solids Sales per Cow



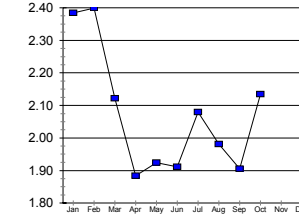
### PPD Received



### Butterfat Price



### Protein Price



### Solids Price

